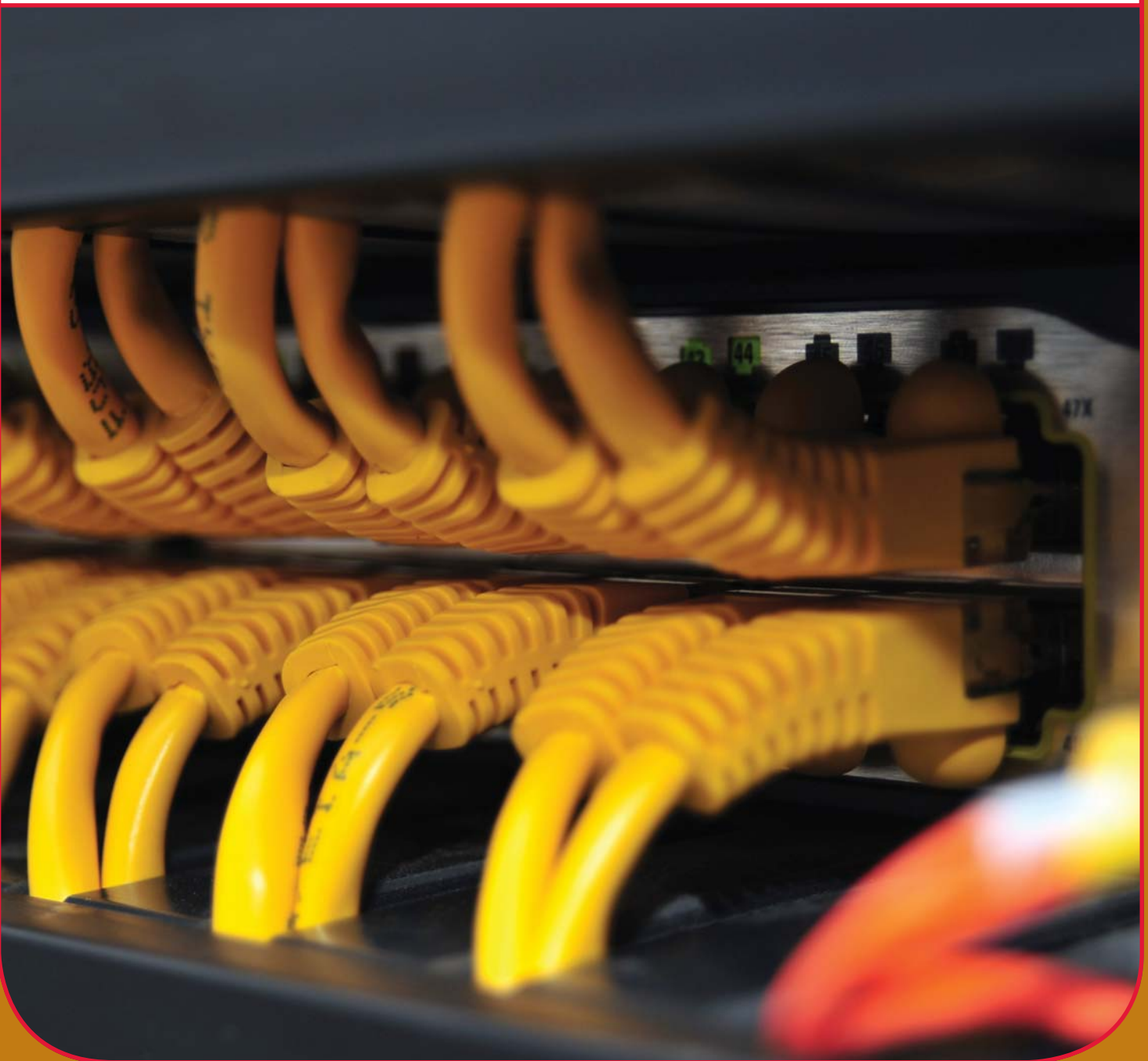


SMP DATA COMMUNICATIONS

COPPER CLOSET

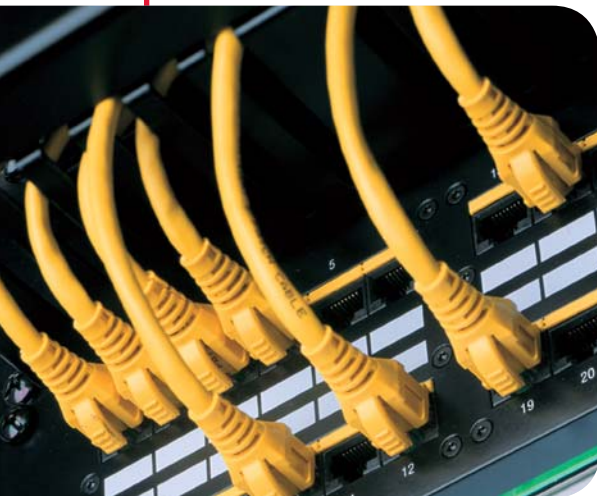


COPPER CLOSET

CONTENTS:

- CC-2** Limited Access Solution
- CC-5** Category 6a Solutions
- CC-8** Patch Panels
- CC-14** Zone Distribution Solutions
- CC-17** Cable Assemblies & Patch Cords
- CC-20** 110 Blocks

SMP Data Communications' Copper Closet connectivity solutions offer customers engineering excellence and design innovation. From patented circuit board technology to 100% component performance-tested patch cords, SMP continuously strives to produce quality connectivity components that offer reliability and value. This dedication to manufacturing produces components that exceedingly surpass industry standards and customer expectations.



LIMITED AXCESS

APPLICATIONS

- 10GBASE-T Ethernet
- 1000BASE-T Gigabit Ethernet
- 100BASE-TX Fast Ethernet
- 10BASE-T Ethernet
- Voice
- Broadband Video
- All other applications developed for operation over class E cabling



Keyed Copper Network Solutions

In part because of the research and development associated with developing a guaranteed 10 Gig system, SMP was able to generate a whole new product line for securing and segmenting network access while continuing to offer superior performance. The patented Limited Axcess™ RJ45 product line offers enhanced network security by providing physically restrictive access to the network using a unique plug and jack interconnect system.

Additionally, SMP's signature Bezel system and Patch Cord boot combination create multiple levels of keyed access to the network. This break through technology provides enhanced system performance exceeding TIA Category 6a component requirements. Whether your concern is HIPAA, Sarbanes Oxley, Security Clearance or just controlled access to your network, SMP Data Communication's Limited Axcess™ product line will provide physical control of user access for the network administrator and bandwidth above any copper system available.

- Limited Axcess™ jacks exceed Category 6a component performance requirements
- Two layers of enhanced security may be deployed independently, as either the proprietary plugs and jacks or keyed bezels.
- Prohibits unauthorized access.
- Available in 8 different colored keyed bezel and boot combinations.
- Conversion patch cords are available to connect standard Ethernet hardware to the Limited Axcess™ network.
- UL listed communications circuit accessory.
- Compliant with Power over Ethernet (PoE) requirements
- Contact material - high strength beryllium copper alloy Contact plating - 50 µin gold over nickel

COPPER CLOSET

CC-3

Limited Access™ Jacks

SMP's patented Limited Access™ jacks are the initial component when creating a Limited Access secure network. These unique jacks offer an innovative security layer for establishing a physically restrictive network system through keyed configurations and locking keyed bezels. Deployed with the keyed strain relief and plugs found on the Limited Access patch cords, the entire system can easily segregate any network segment for physical security. In addition to the security aspect of the Limited Access jacks, these RJ45 components exceed TIA Category 6a component performance requirements with a dramatic increase in primary parameter performance.



- Bezels may be applied after installation to lock jacks in place
- Compliant with Power over Ethernet (PoE) requirements
- Contact material high strength beryllium copper alloy; Contact plating – 50 µm gold over nickel
- Available in 8 different colored keyed bezel combinations
- Shielded keystone version available as well – call factory for details

Limited Access™ Jacks

Catalog Number	Description
LA6Axx	Limited Access™ Cat 6a RJ45 jack with keyed bezel

* Replace "xx" with color code – see color code chart

Limited Access™ Color Code Chart

Code	Color	Code	Color
02	Black	06	Gray
03	Red	07	White
04	Green	08	Orange
05	Blue	09	Yellow

Limited Access™ Patch Cords



The Limited Access™ patch cord, with its patented plug technology, is a key component to creating a secure Limited Access system. This one-of-a-kind patch cord uses a keyed plug and a unique locking boot to provide two layers of physically restrictive network security. Both these layers of enhanced security may be deployed independently as either the proprietary plugs with corresponding jacks or the keyed

bezels with matching locking boots. In addition, performance exceeds TIA Category 6a component requirements.

- Locking boot applied during manufacturing
- Conversion patch cords available to connect standard Ethernet hardware to the Limited Access system
- Available in 8 different colored keyed boot combinations
- Cable color is gray

Limited Access™ Patch Cords

Catalog Number										
LAPC6A		-	M		-			-	XX	YY
Cable Type		Plug One		Plug Two		Plug Two Boot		Length In Feet		Denotes Boot Color
S Shielded		K Keyed Boot		M Keyed Plug		K Keyed Boot				See Color Code Chart
U Unshielded		B Non-keyed Boot		A 568A Wired		B Non-keyed Boot				
				B 568B Wired		S Slimline Boot				
						N No Boot				

Ex: **LAPC6AS-MK-AS0309** = Limited Access™ Shielded Patch Cord, Keyed plug and boot on one side and A wired with Slimline boot on other side, 3 feet, yellow

Ex: LAPC6AS-MK-AS0309 = Limited Access™ Shielded Patch Cord, Keyed plug and boot on one side and A wired with Slimline boot on other side, 3 feet, yellow

Limited Axxess™ Secure Faceplates

To create truly limiting admission to secure networks, SMP went one step further in developing the Limited Axxess™ product line and created faceplates that offer an added layer of defense for segregating specific networks. The SMP Secure faceplate is double layered with the outer stainless steel faceplate acting as a locking mechanism, securing the bezels onto the jack and preventing access for removal.

- Stainless steel construction for corrosion resistance
- Tamper proof screws included
- Minimum ordering quantities may apply



Limited Axxess™ Secure Faceplates

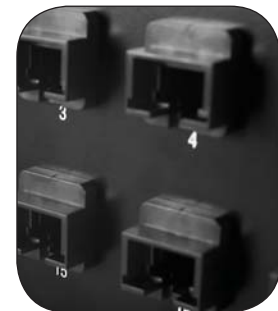
Catalog Number	Description
LAFP01SS	Limited Axxess™ Stainless Steel Secure Faceplate Kit, 1 port
LAFP02SS	Limited Axxess™ Stainless Steel Secure Faceplate Kit, 2 port

Limited Axxess™ Patch Panels

From the outlet to the equipment room, SMP's new keyed copper solution offers physically restrictive access to assist in network segregation. For the communications closet, the Limited Axxess™ system allows network administrators to easily control user connectivity to specific network segments. By using SMP's 24 port snap-in patch panel and Limited Axxess™ RJ45 jacks, network permissions can be effortlessly managed.

Furthermore, Limited Axxess™ patented technology provides enhanced system performance exceeding Category 6a requirements. This one-of-a-kind system is ideal for applications where restrictive network security is required or for end users looking for superior bandwidth performance.

- 24 port snap-in panel
- Limited Axxess™ and color options on page CC-3



Limited Axxess™ Patch Panels

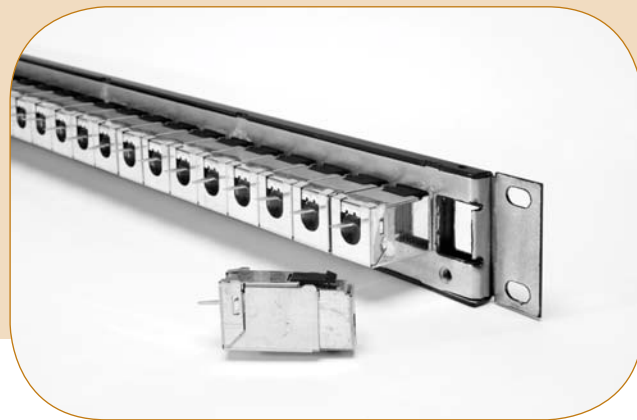
Catalog Number	Description
A24	Limited Axxess™ Snap-In Patch Panel, 24 Port, 2 RU (Jacks not included)

Category 6a Solution

For 10 GBASE-T Applications

APPLICATIONS

- 10GBASE-T Ethernet
- 1000BASE-T Gigabit Ethernet
- 100BASE-TX Fast Ethernet
- 10BASE-T Ethernet
- Broadband Video
- 155/622 Mbps ATM
- 100 Mbps TP-PMD
- 4/16 Mbps Token Ring
- Voice



With the number of new 10 Gigabit structured cabling solutions flooding the market, SMP has developed a system that sets the standard for this next generation of technology. SMP created components that are not only guaranteed to surpass the IEEE throughput standards but exceed the elevated frequency response requirements of TIA. This deliberate and methodical approach to component design has led SMP to create superior 10 Gigabit shielded and un-shielded systems. Within these system solutions, SMP has kept one thing constant and that is our commitment to quality. Whether choosing a UTP or FTP 6a solution, customers can be assured that they are getting a connection to count on.

SMP's 10 Gig solution reaches beyond the current Category 6 specifications and creates a system that offers enhanced performance and guaranteed 6a connectivity. As a system, the SMP UTP or FTP 6a solution offers superior alien cross-talk performance that exceeds ISO Class E, Augmented Cat 6 and IEEE 10 GBASE-T requirements for a full 100 meters.

- Guaranteed 10 GBASE-T link segment performance compliant
- 10 GBASE-T 100m Solution
- Backward compatibility (Cat 6, Cat 5e, and Cat 3 compliant)
- Fully inter-operable with other standards based components and systems
- Power over Ethernet (PoE) compliant
- Twice the bandwidth of Category 6 cabling

CATEGORY 6a SOLUTION

CC-6

COPPER CLOSET

Category 6a Outlet Jacks

SMP's Augmented Category 6 jack offers a high performance interconnect hardware component in a compact form factor. This RJ45 Slim-line Category 6a jack provides a comprehensive solution for high performance structured cabling systems. Using patented crosstalk reduction technology and multiple printed circuit boards, SMP engineering has developed its highest performing component product yet. In addition to the performance levels, the small sized form factor of the Slim-line design supports high density applications allowing for 24 ports in a 1U panel for shielded applications.

- Guaranteed Augmented Category 6 compliant
- Slim-line profile allows 24 ports in a 1U panel.
- IEEE - 10GBASE-T 802.3an clause 55.7 (compliant to link definition)
- TIA - TSB-155 (Channel compliant) & 568b.2-10 (Component compliant)
- ISO - TR-24750 (Channel compliant)
- Versatile form factor allows implementation in most vendor faceplates.
- New high performance contacts provide low crosstalk with improved mechanical robustness.
- Single stuffer cap.
- Terma-grip technology for easy field installation.
- Minimized shielding aperture size for reduced EMI emissions.
- 2 PCB Mezzanine assemblies for low crosstalk performance in a small form factor.
- Improved strain relief system designed for Category 6a cable.
- UL listed communications circuit accessory.
- Large easy-to-read color code labels.
- Compliant with Power over Ethernet (PoE) requirements.
- Contact material - high strength beryllium copper alloy
- Contact plating - 50 pin gold over nickel

SMP Category 6a Outlet Jacks

Catalog Number	Description
U6Axx	Category 6a UMJ outlet jack, UTP - Unshielded
K6Axx	Category 6a KMJ outlet jack, UTP - Unshielded, Slim-line
K6A02S	Category 6a KMJ outlet jack, FTP - Shielded, Slim-line
* Replace "xx" with color code – see color code chart in Workstation section – KMJ Jacks & Adapters	

Category 6a Patch Cords

To complete the link, SMP created Category 6a station cords that guarantee 6a compliance and offer superior PSANEXT performance suitable for mitigation of alien cross-talk. These station cords also improve the external noise immunity of structured communications cabling systems and EMI suppression through shielded cabling and plug design. Overall, SMP's Cat 6a patch cords assist in creating a complete 10 Gigabit throughput system that is reliable for years to come.

- Guaranteed Augmented Category 6 compliant
- Backward compatible with Category 3, 5, 5e and 6
- Superior PSANEXT performance suitable for mitigation of alien cross-talk in existing installs
- Superior PSAACR-F performance
- Superior EMI suppression

- Improves the external noise immunity of structured cabling systems
- LS0H or PVC cable construction
- PVC patch cord is UL Listed

SMP Category 6a Patch Cords

Catalog Number	Description
PC6AS-B-xyyy*	Category 6a patch cord with boot
* Replace "xx" with length in feet; replace "yy" with color choice - 06=Data Gray (Standard)	
** UL Listed CCA File E137579	
Ex: PC6AS-B-0306 = Category 6a patch cord with boot, 3 feet, Gray (Standard)	

Category 6a Patch Panels

SMP Data Communications' Category 6a Patch Panels offer a high density solution for guaranteed 10GBASE-T Ethernet applications. Both SMP's UTP and FTP Cat 6a patch panels present a product solution that exceeds proposed 10Gbit standards by TIA/EIA and promises superior performance compliance. As a 10 Gig component, the Category 6a patch panel is ideal for end users who are looking for superior network performance to keep their infrastructure lasting well into the future.

- Guaranteed Augmented Category 6 compliant
- Backward compatible to Category 3, 5, 5e, and 6
- Offers mounting flexibility and removable cable strain-relief bar that attaches directly to panel
- All steel construction ensures panel rigidity and reliable terminations
- Can be easily mounted to any 19" rack or cabinet
- High density configuration allows for 24 ports in a 1U rack space
- Write on window plates for port identification
- TIA-TSB 155 & 568B.2-10 component compliant
- ISO 24750 compliant
- IEEE 802.3an 10GBASE-T link segment (Clause 55.7) compliant – when installed with approved cable and patch cords
- CSA certified
- Insulation resistance – 500 MΩ minimum
- Dielectric withstand – 1000 VAC RMS, AC 60 Hz or 1414 VDC P-P
- DC current rating – 1.5 A per conductor at 20° C ambient de-rated to 0.75 A at 60° C ambient



SMP Category 6a Patch Panels

Catalog Number	Description
AAXG6A16-UTP	Category 6a 10 Gig UTP Patch Panel, UMJ style, 1 RU, 16 port
AAXG6A24-UTP	Category 6a 10 Gig UTP Patch Panel, UMJ style, 2 RU, 24 port
AAXG6A32-UTP	Category 6a 10 Gig UTP Patch Panel, UMJ style, 2 RU, 32 port
AAXG6A48-UTP	Category 6a 10 Gig UTP Patch Panel, UMJ style, 4 RU, 48 port
AKXG6A16-UTP	Category 6a 10 Gig UTP Patch Panel, KMJ style, 1 RU, 16 port
AKXG6A16-FTP	Category 6a 10 Gig FTP Patch Panel, Shielded KMJ style, 1 RU, 16 port
AKXG6A24-FTP	Category 6a 10 Gig FTP High Density Patch Panel, Shielded KMJ style, 1 RU, 24 Port
AKXG6A32-FTP	Category 6a 10 Gig FTP Patch Panel, Shielded KMJ style, 2 RU, 32 Port
AKXG6A48-FTP	Category 6a 10 Gig FTP Patch Panel, Shielded KMJ style, 2 RU, 48 Port

Patch Panels

Category 6

When Category 6 was introduced to the market, SMP brought a product offering that was designed to exceed industry expectations and surpass the governing standards. SMP created Category 6 connectivity components that offered patented technology and guaranteed bandwidth performance. SMP's Category 6 patch panels were no exception. Developed to offer true performance, SMP's Category 6 patch panels are assured to meet the standard when verified.

APPLICATIONS

- TIA/EIA 854 Gigabit Ethernet over Cat 6 Cabling
- 1000BASE-T Gigabit Ethernet
- 100BASE-TX Fast Ethernet
- 10BASE-T Ethernet
- Broadband Video
- 270 Mbps digital video
- 155/622 Mbps ATM
- 100 Mbps TP-PMD
- 100 VG-AnyLan
- 4 / 16 Mbps Token Ring
- Voice



- Category 6 component compliant
- 610 punch down block
- ETL Verified to TIA/EIA 568-B.2-1 Cat 6
- Power-Safe modular jack contacts
- SMP patented PCB technology
- Backward compatible, Cat 3, 5, & 5e
- Mounting flexibility
- Removable cable strain-relief bar attaches directly to Panel
- All steel panel (no plastic frames) ensures panel rigidity and reliable terminations
- IKON compatible - 12 colors
- Universal T568A/B wiring for easy installation
- 6 Port component modules
- Write-on label fields
- Rigid Box-Section panel construction
- Long term application confidence
- Compliant with power over Ethernet requirement
- All components made in the U.S.

Access 6™ Patch Panels

Catalog Number	Description
PP12SIX	Wall Mount Patch Panel, 568A/B wired, 12 port, 89D Bracket
PP1288/110A6	Wall Mount Patch Panel, 568A/B wired, 12 port
PP2488/110A6	Wall Mount Patch Panel, 568A/B wired, 24 port
DCC1288/110SIX	Rack Mount Patch Panel, 568A/B wired, 12 port, 1 RU
DCC1688/110SIX	Rack Mount Patch Panel, 568A/B wired, 16 port, 1 RU
DCC2488/110SIX	Rack Mount Patch Panel, 568A/B wired, 24 port, 1 RU
DCC3288/110SIX	Rack Mount Patch Panel, 568A/B wired, 32 port, 2 RU
DCC4888/110SIX	Rack Mount Patch Panel, 568A/B wired, 48 port, 2 RU
DCC6488/110SIX	Rack Mount Patch Panel, 568A/B wired, 64 port, 4 RU
DCC9688/110SIX	Rack Mount Patch Panel, 568A/B wired, 96 port, 4 RU
DCC12088/110SIX	Rack Mount Patch Panel, 568A/B wired, 120 port, 5 RU
DCC1688/110SIX-S	Rack Mount Patch Panel, 16 Port, KMJ Shielded Jacks, 1 RU
DCC2488/110SIX-S	Rack Mount Patch Panel, 24 Port, KMJ Shielded Jacks, 2 RU
DCC3288/110SIX-S	Rack Mount Patch Panel, 32 Port, KMJ Shielded Jacks, 2 RU
DCC4888/110SIX-S	Rack Mount Patch Panel, 48 Port, KMJ Shielded Jacks, 2 RU
ACC2488/110SIX	Rack Mount Patch Panel, Angled, 568A/B wired, 24 port, 1 RU
ACC4888/110SIX	Rack Mount Patch Panel, Angled, 568A/B wired, 48 port, 2 RU

PATCH PANELS

COPPER CLOSET

CC-9

Category 5e -110 Style

SMP's Category 5e patch panels incorporate SMP's best design and application performance specifications ever. The A5E™ product line provides unmatched performance in premise connectivity. Designed for the most demanding network applications, SMP created Category 5e patch panels that offer customers the highest level of headroom to any Category 5e link or channel.

- Comfortably exceeds EIA/TIA 568-B.2 Category 5e standards
- ISO/IEC11801 compliant
- Patented PC Board Technology
- Constructed of cold rolled steel for durability
- Rigid design provides solid frame for hi-impact punching tools
- Universal TIA 568A/B wiring configuration
- IDC's withstand 200 wire insertions
- Write on label fields
- IKON compatible – 12 colors
- Cable strain relief bar provided
- All components made in U.S.



APPLICATIONS

- 1000BASE-T Gigabit Ethernet
- 100BASE-TX Fast Ethernet
- 10BASE-T Ethernet
- Broadband video
- 270 Mbps digital video
- 155 / 622 Mbps ATM
- 100 Mbps TP-PMD
- 100 VG AnyLan
- 4 / 16 Mbps Token Ring
- Voice



A5E™ Patch Panels

Catalog Number	Description
PP12A5E	Wall Mount Patch Panel, 568A/B wired, 12 port, with 89D bracket
PP1288/110A5E	Wall Mount Patch Panel, 568A/B wired, 12 port
PP2488/110A5E	Wall Mount Patch Panel, 568A/B wired, 24 port
DCC1288/110A5E	Rack Mount Patch Panel, 568A/B wired, 12 port, 1 RU
DCC1688/110A5E	Rack Mount Patch Panel, 568A/B wired, 16 port, 1 RU
DCC2488/110A5E	Rack Mount Patch Panel, 568A/B wired, 24 port, 1 RU
DCC3288/110A5E	Rack Mount Patch Panel, 568A/B wired, 32 port, 2 RU
DCC4888/110A5E	Rack Mount Patch Panel, 568A/B wired, 48 port, 2 RU
DCC6488/110A5E	Rack Mount Patch Panel, 568A/B wired, 64 port, 4 RU
DCC9688/110A5E	Rack Mount Patch Panel, 568A/B wired, 96 port, 4 RU
DCC12088/110A5E	Rack Mount Patch Panel, 568A/B wired, 120 port, 5 RU
ACC2488/110A5E	Rack Mount Patch Panel, Angled, 568A/B wired, 24 port, 1 RU
ACC4888/110A5E	Rack Mount Patch Panel, Angled, 568A/B wired, 48 port, 2 RU

Category 5e - Shielded 110 Style

SMP's shielded Category 5e patch panels provide superior performance with an extra sense of security. A removable cover protects against external noise and wireless technologies while also offering easy access for termination. Just like all A5E™ patch panels by SMP, performance is designed to exceed EIA/TIA 568-B.2 Category 5e standards.

- Comfortably exceeds EIA/TIA 568-B.2 Category 5e standards
- ISO/IEC11801 compliant
- Fully shielded RJ45 jacks
- Patented PC Board Technology
- Rigid design provides solid frame for hi-impact punching tools
- 110 Style punch down for easy terminations
- IDC's withstand 200 wire insertions
- Write on label fields
- IKON compatible – 12 colors
- Removable cable strain-relief bar attaches directly to Panel
- Removable cover for protection from EMI and RFI emissions
- All components made in U.S.



APPLICATIONS

- 1000BASE-T Gigabit Ethernet
- 100BASE-TX Fast Ethernet
- 10BASE-T Ethernet
- Broadband video
- 270 Mbps digital video
- 155 / 622 Mbps ATM
- 100 Mbps TP-PMD
- 100 VG AnyLan
- 4 / 16 Mbps Token Ring
- Voice

A5E™ Shielded Patch Panels

Catalog Number	Description
DCC1688/110S01	Rack Mount Patch Panel, Shielded 110-style, 568B wired, 8 port modules, 16 port, 1 RU
DCC1688/110S03	Rack Mount Patch Panel, Shielded 110-style, 568A wired, 8 port modules, 16 port, 1 RU
DCC2488/110SAB	Rack Mount Patch Panel, Shielded, 110 style, 568A/B wired, 8 port modules, 24 Port, 1 RU
DCC2488/110S6-01	Rack Mount Patch Panel, Shielded 110-style, 568B wired, 6 port modules, 24 port, 1 RU

Voice Grade Telco

The same cross-connect solutions available for Ethernet applications are also available for PBX equipment. For these applications, SMP offers Voice Grade Telco Patch Panels which break out to 24-RJ45 jacks. Customers can easily patch their phone system into the permanent link by simply using patch cords and open ended cable assemblies punched down to a 110 block, 66-block, or 110 patch panel.

- Patented PC Board Technology
- Constructed of extruded aircraft grade aluminum
- 25 Pair Telco connectors allow for quick connects and easy installations
- Write on label fields
- IKON compatible – 12 colors
- All components made in U.S.

Voice Grade Telco Patch Panels

Catalog Number	Description
DCC2462/2502	Rack Mount Patch Panel, Telco Interface panel, 6x2, USOC, 24 Port
DCC2464/2502	Rack Mount Patch Panel, Telco Interface panel, 6x4, USOC, 24 Port
DCC2482/2502	Rack Mount Patch Panel, Telco Interface panel, 8x2, USOC, 24 Port



Gigabit Ethernet Telco

High speed data connections are essential for keeping pace with today's business climate. SMP took this into consideration when developing patch panels that offered 1000BASE-T Gigabit Ethernet performance. Not only does the performance exceed industry standards, SMP's Gigabit Ethernet Patch Panels are 100% component tested in the factory guaranteeing the customer worry-free installations.

- Exceeds EIA/TIA 568-B.2 specifications
- ISO/IEC11801 compliant
- Patented PC Board Technology
- All steel construction for durability
- All plastic components are high impact self-extinguishing, rated 94V-0
- Each female Telco connector is split out to 6 RJ45 ports wired for 1000BASE-T applications
- Fast and easy installations
- Write on label fields
- IKON compatible – 12 colors
- Fully adjustable cable management support bar and bend radius requirements
- All components made in U.S.



APPLICATIONS

- 1000BASE-T Gigabit Ethernet
- 100BASE-TX Fast Ethernet
- 10BASE-T Ethernet
- Broadband video
- 155 / 622 Mbps ATM
- 100 Mbps TP-PMD
- 100 VG Any LAN
- 4 / 16 Mbps Token Ring
- Voice



Gigabit Ethernet Patch Panels

Catalog Number	Description
PP1288/25V03	Wall Mount Patch Panel, Gigabit Telco, 568A wired, 12 Port
PP1288/25V01	Wall Mount Patch Panel, Gigabit Telco, 568B wired, 12 Port
PP2488/25V03	Wall Mount Patch Panel, Gigabit Telco, 568A wired, 24 Port
PP2488/25V01	Wall Mount Patch Panel, Gigabit Telco, 568B wired, 24 Port
DCC24A/GBASET21	Rack Mount Patch Panel, Gigabit Telco, 568A wired, 24 Port with cover
DCC24B/GBASET21	Rack Mount Patch Panel, Gigabit Telco, 568B wired, 24 Port with cover
DCC48A/GBASET21	Rack Mount Patch Panel, Gigabit Telco, 568A wired, 48 Port with cover
DCC48B/GBASET21	Rack Mount Patch Panel, Gigabit Telco, 568B wired, 48 Port with cover
DCC2488/25S-01	Rack Mount Patch Panel, Shielded Gigabit Telco, 568B wired, 24 Port with cover
ACC2488/25V01	Rack Mount Patch Panel, Angled, Gigabit Telco, 568B wired, 24 port, 1 RU
ACC4888/25V01	Rack Mount Patch Panel, Angled, Gigabit Telco, 568B wired, 48 port, 2 RU

Fast Ethernet Telco

SMP was one of the first developers of Category 5e compliant 100BASE-T Patch Panels that support advanced high-density Telco ports. Each female 25-pair Telco connector is split out to 12-RJ45 ports wired for 100BASE-T applications for fast and easy installations. Developed initially for use with Cisco switches, SMP's Fast Ethernet Telco patch panels offer customers a single source solution that guarantees unrivaled 100BASE-T performance.

- Exceeds EIA/TIA 568-B.2 specifications
- ISO/IEC11801 compliant
- Patented PC Board Technology
- All steel construction for durability
- All plastic components are high impact self-extinguishing, rated 94V-0
- Each female Telco connector is split out to 12 RJ45 ports wired for 100BASE-TX applications
- Fast and easy installations
- Write on label fields
- IKON compatible – 12 colors
- Removable cable strain-relief bar attaches directly to Panel
- Also available in shielded version
- All components made in U.S.



Fast Ethernet Patch Panels

Catalog Number	Description
PP2484/25VEFS100	Wall Mount Patch Panel, Telco, 24 Port
DCC2484/25V100	Rack Mount Patch Panel, Telco, 24 Port, 2 RU
DCC3684/25V100	Rack Mount Patch Panel, Telco, 36 Port, 2 RU
DCC4884/25V100	Rack Mount Patch Panel, Telco, 48 Port, 2 RU
DCC9684/25V100	Rack Mount Patch Panel, Telco, 96 Port, 4 RU
DCC4884/25S-100	Rack Mount Patch Panel, Shielded Telco, 48 Port, 2 RU

APPLICATIONS

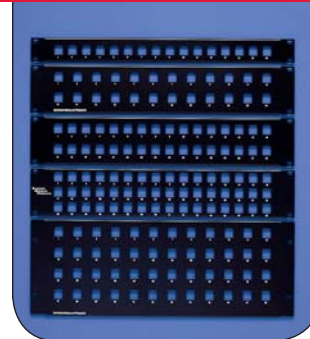
- 100BASE-TX Fast Ethernet
- 10BASE-T Ethernet
- Broadband video
- 270 Mbps digital video
- 155 / 622 Mbps ATM
- 100 Mbps TP-PMD
- 100 VG Any LAN
- 4 / 16 Mbps Token Ring
- Voice



Snap In Multi – Media Panels

Access™ Snap-In Multi-media Patch Panels

Catalog Number	Description
A16	Rack Mount Empty Patch Panel, UMJ style, 16 Port, 1 RU
A24	Rack Mount Empty Patch Panel, UMJ style, 24 Port, 2 RU
A32	Rack Mount Empty Patch Panel, UMJ style, 32 Port, 2 RU
A48H	Rack Mount Empty Patch Panel, UMJ style, 48 Port, High Density 2 RU
A48	Rack Mount Empty Patch Panel, UMJ style, 48 Port, 4 RU
ACC24U	Rack Mount Empty Patch Panel, Angled, UMJ style, 24 port, 1 RU
ACC48U	Rack Mount Empty Patch Panel, Angled, UMJ style, 48 port, 2 RU
AK16	Rack Mount Empty Patch Panel, KMJ style, 16 Port, 1 RU
AK24	Rack Mount Empty Patch Panel, KMJ style, 24 Port, 1 RU
AK48H	Rack Mount Empty Patch Panel, KMJ style, 48 Port, High Density 2 RU
AK481U	Rack Mount Empty Patch Panel, KMJ Style, 48 port, 1RU
AK16STP	Rack Mount Empty Patch Panel, KMJ style, Shielded, 16 Port, 1 RU
AK24STP	Rack Mount Empty Patch Panel, KMJ style, Shielded, 24 Port, 1 RU
AK48STP	Rack Mount Empty Patch Panel, KMJ style, Shielded, 48 Port, 3 RU
ACC24K	Rack Mount Empty Patch Panel, Angled, KMJ style, 24 port, 1 RU
ACC24KS	Rack Mount Empty Patch Panel, Angled, KMJ style, Shielded, 24 port, 1 RU
ACC48K	Rack Mount Empty Patch Panel, Angled, KMJ style, 48 port, 2 RU
ACC48KS	Rack Mount Empty Patch Panel, Angled, KMJ style, Shielded, 48 port, 2 RU



The ability to be flexible and adaptable to each customer's unique needs has been SMP's speciality for years. With SMP's Snap-In Multi-media patch panels, any combination of UMJ or KMJ style jacks and adapters can be chosen to configure a custom patch panel. All Multi-media patch panels are mountable in any 19" rack.

- Ports will accommodate any UMJ or KMJ jack or adapter
- Constructed of extruded aircraft grade aluminum for durability
- Write on label fields
- IKON compatible – 12 colors

Patch Panel Accessories

SMP's IKON kits color code patch panels for easy labeling and to meet EIA/TIA 606 port identification requirements. IKON kits may be used to dress up any A5E™ or Axxess 6™ patch panel. Snap-In Multi-media panels and all kits include enough IKONS to color every port with any 9 colors.

EIA/TIA color coding – SMP color code:

- Key Telephone Systems Red – 03
- Network Communications Green – 04
- Station Blue – 05
- Second Level Backbone Gray – 06
- First Level Backbone White – 07
- Demarcation Point Orange – 08
- Miscellaneous Yellow – 09
- Common Equipment Purple – 10
- Inter-building Backbone Brown – 11



IKON Kits

Catalog Number	Description
IKON1U	IKON Kit for 10-24 Ports, 9 color assortment
IKON2U	IKON Kit for 32-48 Ports, 9 color assortment
IKON3U	IKON Kit for 64-96 Ports, 9 color assortment
IKON5U	IKON Kit for up to 120 Ports, 9 color assortment
IKONxx	IKON Kit, Pack of 100 6-port strips
* Replace "xx" with color code (See chart on left)	



Zone Distribution Solutions

Zone Cross Connect

SMP's zone distribution solutions optimize any horizontal cabling infrastructure. Through innovative designs, SMP continues to provide zone cross connect solutions that meet every need. Whether using SMP's 6-Port Interconnect Module or the new "Spider" Zone Module, the convenience and reliability of SMP technology guarantees performance for high speed applications.

Zone Interconnect Modules (Field Terminable)

Catalog Number	Description
ZDIMA5E	Zone Interconnect Module, Category 5e, 568A/B wired, 6 port (pictured above)
ZDIMSIX6A/B	Zone Interconnect Module, Category 6, 568A/B wired, 6 port (not pictured, mounts to an 89D bracket)

APPLICATIONS

- 1000BASE-T Gigabit Ethernet
- 100BASE-TX Fast Ethernet
- 10BASE-T Ethernet
- Broadband Video
- 155 / 622 Mbps ATM
- 100 Mbps TP-PMD
- 4 / 16 Mbps Token Ring
- Voice
- Universal 568A/B wiring
- Compact design allows for easy installation
- Ideal in multiple situations, i.e. under floor, power pole, and multi-port workstations
- May be factory assembled with cable or field terminated.
- All components made in the U.S.

25-Pair Zone Distribution Cable Assemblies

Catalog Number					Description
25ZD/				-	25-Pair Zone Distribution Cable Assembly

Cable Type & Category	Wiring Type	End Type	Length In Feet
5E Cat 5e Riser	6A 568A wired	TR Telco Right	
EP Cat 5e Plenum	6B 568B wired	TL Telco Left	
		TS Telco Straight	
		X Blunt End – No Connector	
		HR Hydra Right	
		HL Hydra Left	
		HSxx* Hydra Straight	
*Replace "xx" with length of legs (12 or 24)			



Ex: 25ZD/5E6BTS-100 = 25 Pair Cable Assembly, Zone Distribution module to Telco Straight, Cat 5e Riser, 568B wired, 100 Feet

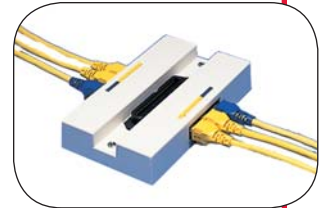
Zone Distribution Box

Perfect for serving multiple remote outlets, SMP's Zone Distribution Box provides an easy connection between a 25-pair cable and six modular ports. Each box is constructed with one female Telco connector and 6-RJ45 jacks, 3 on each side. With its compact design, the Zone Distribution Box can easily be used as a wall mountable mini patch panel for increased cost effectiveness.

- Available in 568A or 568B wired applications
- Patented PC Board technology
- Ideal for multiple situations, i.e. under floor, ceiling, and multi-port workstations
- Mounts anywhere
- All components made in the U.S.

APPLICATIONS

- 1000BASE-T Gigabit Ethernet
- 100BASE-TX Fast Ethernet
- 10BASE-T Ethernet
- Broadband Video
- 155 / 622 Mbps ATM
- 100 Mbps TP-PMD
- 4 / 16 Mbps Token Ring
- Voice



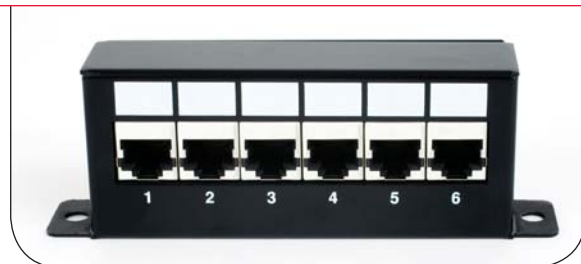
Zone Distribution Box

Catalog Number	Description
ZDB6VA01	Zone Distribution Box, 568A wired, 6 Port
ZDB6VB01	Zone Distribution Box, 568B wired, 6 Port

Zone Distribution Jack Packs

Created for completely modular connections, the SMP Jack Pack is ideal for any zone distribution application and can easily be mounted anywhere. With performance that exceeds all standards requirements, the Jack Pack offers a multitude of application solutions. Whether mounting to cable tray for a quick cross connect point or using as a distribution site within an equipment room, the SMP Jack Pack offers guaranteed performance in a compact package.

- Available for 10/100 or Gigabit Ethernet applications
- Exceeds EIA/TIA 568A specifications
- Patented PC Board Technology
- Compact design
- Mounts anywhere
- Also available in shielded
- All components made in the U.S.



Zone Distribution Jack Packs

Catalog Number	Description
ZDIM81225TX	Zone Distribution Jack Pack, 10/100 RJ45 to Female Telco, 568B wired, 12 Port
ZDIM8625A	Zone Distribution Jack Pack, Gigabit RJ45 to Female Telco, 568A wired, 6 port
ZDIM8625B	Zone Distribution Jack Pack, Gigabit RJ45 to Female Telco, 568B wired, 6 Port
ZDIM8625BS	Zone Distribution Jack Pack, Gigabit Shielded RJ45 to Female Telco, 568B wired, 6 Port

Zone "Spider" Distribution Solutions (for cable tray)

SMP's new Zone "Spider" Distribution Solutions for cable tray mounting provide a convenient means to access copper network cross connect points. The copper modules are manufactured with Telco PCB assemblies factory installed for fast and easy installations. Simply insert the Telco cable assembly and patch cords and the job is finished. These modules allow customers to take the distribution point out of the equipment room to where it's needed, while giving installers less installation time and a reduction in cabling costs.

- Available for 10/100 or Gigabit Ethernet applications
- Exceeds EIA/TIA 568-B.2 specifications
- ISO/IEC11801 compliant
- Patented PC Board Technology
- Expandable design will fit tray widths from 12" to 18"
- Easy installations and additions without disturbing previously installed cable
- Reduces the number of cables and congestion in a cable tray
- All components made in the U.S.

APPLICATIONS

- 1000BASE-T Gigabit Ethernet (only on Gigabit Ethernet module)
- 100BASE-TX Fast Ethernet
- 10BASE-T Ethernet
- Broadband Video
- 155 / 622 Mbps ATM
- 100 Mbps TP-PMD
- 4 / 16 Mbps Token Ring
- Voice



Zone "Spider" Distribution Solution (for cable tray)

Catalog Number	Description
ZDMB12/25V100	Zone Distribution Module, 10/100 Telco, 12 Port
ZDMB12A/GBASET21	Zone Distribution Module, Gigabit Telco, 568A wired, 12 Port
ZDMB12B/GBASET21	Zone Distribution Module, Gigabit Telco, 568B wired, 12 Port

Cable Assemblies

As the industry demands systems with faster installation times and less network interruption, SMP developed a modular solution to meet those specific communications cabling needs. Using 25-pair Telco cable assemblies coupled with SMP Telco patch panels, SMP created a solution that is as simple as Plug-and-Play. SMP's 25-pair

Telco cable assemblies make moves/adds/changes more flexible, air passages less restricted and data throughput rates uninterrupted.

Each 25-pair assembly is designed to support new interface technology of leading switch manufacturers. Constructed to exceed

EIA/TIA Category 5e specifications, SMP's Telco assemblies offer guaranteed Gigabit throughput with 100% component testing to their specified protocols. From rack mount to zone distribution, SMP's PowerSum-Rated 5e assemblies offer a wide variety of options to meet 10/100 and Gigabit Ethernet solutions.

- Exceeds EIA/TIA Category 5e specifications
- Utilizes UL certified Cat 5e 25-pair cable
- 100% component testing for guaranteed Gigabit Ethernet performance
- All Telco to Telco assemblies are male-to-male
- All Hydra assemblies are manufactured with precise leg measurements to span 19" racks or a stand alone switch
- Works with high-density 48 port blades
- 50-pin Telco connectors available in 120° or 180° angles
- Available with right, left, or straight connectors – plenum or non-plenum
- Shielded 25-pair cable assemblies also available

APPLICATIONS

- 1000BASE-T Gigabit Ethernet
- 100BASE-TX Fast Ethernet
- 10BASE-T Ethernet
- Broadband Video
- 155 Mbps ATM
- 100 Mbps TP-PMD
- 100 VG AnyLAN
- 4/16 Mbps Token Ring
- Voice



Telco to Telco Cable Assemblies

25-Pair Telco to Telco Cable Assemblies


Catalog Number						Description
25PA/		-		-		25-Pair Telco to Telco Cable Assembly
End Type		End Type		Cable Type & Category		Length In Feet
TR Telco Right		TR Telco Right		5E Cat 5e Riser		
TL Telco Left		TL Telco Left		EP Cat 5e Plenum		
TS Telco Straight		TS Telco Straight				
		X Blunt End – No Connector				

Ex: 25PA/TR-TR-5E-100 = 25 Pair Cable Assembly with Telco Right to Telco Right, Cat 5e Riser, 100 Feet



Hydra Cable Assemblies:

25-Pair Telco to Gigabit Hydra Cable Assemblies (6 Legs)


Catalog Number						Description
25PA/			6	-		25-Pair Telco to Hydra Cable Assembly
End Type		End Type		Cable Type & Category		<div>Length In Feet</div> 
TR Telco Right		HR Hydra Right		5E Cat 5e Riser		
TL Telco Left		HL Hydra Left		EP Cat 5e Plenum		
TS Telco Straight		HSxx*				
X Blunt End - No Connector		*Replace "xx" with length of legs (12 or 24)				

Ex: 25PA/TRHS1265E-025 = 25 Pair Cable Assembly with Telco Right to Gigabit Hydra Straight, 6 Legs at 12", Cat 5e Riser, 25 Feet

* Must use B-wired Telco panel with 6 Leg Gigabit Hydra Assemblies

25-Pair Telco to 10/100 Hydra Cable Assemblies (12 Legs)

Catalog Number						Description
25PA/			-	-		25-Pair Telco to Hydra Cable Assembly
End Type		End Type		Cable Type & Category		Length In Feet
TR Telco Right	HR Hydra Right	5E Cat 5e Riser				
TL Telco Left	HL Hydra Left	EP Cat 5e Plenum				
TS Telco Straight	HSxx* Hydra Straight					
X Blunt End - No Connector	*Replace "xx" with length of legs (12 or 24)					



Ex: 25PA/TRHS24-5E-050 = 25 Pair Cable Assembly with Telco Right to 10/100 Hydra Straight, 12 Legs at 24", Cat 5e Riser, 50 Feet

CATEGORY 6 PATCH CORDS

COPPER CLOSET

CC-19

Category 6 Patch Cords

SMP's Category 6 patch and workstation cords are the perfect compliment to any SMP Access 6™ copper system. SMP's Access 6 cords offer Onyx Grip, a strain relief solution that ensures mechanical and electrical stability during and after adds, moves or changes. In addition, Access 6 patch cords utilize straight-thru pair orientation and are 100% component performance tested. SMP's test methods have formed the basis for standard patch cord component testing methods in TIA/EIA 568-B.2 -1 Category 6 standards ensuring that the Access 6 patch cord will guarantee performance.

- 100% component performance tested
- Exceeds TIA/EIA 568B.2-1 specifications
- Customizable lengths and colors available
- Shielded version available

Access 6™ Patch Cords

Catalog Number	Description
PCSIxxyy	Category 6 patch cord without boot
PCSIxxByy	Category 6 patch cord with boot
PCSIxSxxByy	Category 6 shielded patch cord with boot
*Replace xx with length in feet; replace yy with color code – (06) gray, (09) yellow	
** Ex: = PCSIX03B09 – Category 6 patch cord, 3 feet, with boot, yellow	



APPLICATIONS

- 1000BASE-T Gigabit Ethernet
- 100BASE-TX Fast Ethernet
- 10BASE-T Ethernet
- Broadband Video
- 155/622 Mbps ATM
- 100 Mbps TP-PMD
- 4/16 Mbps Token Ring
- Voice
- All applications developed for operation over Category 6 or class E cabling



Category 5e Patch Cords

SMP's Category 5e patch cords are manufactured to strict standards, ensuring adherence to TIA/EIA 568-B.2 component performance requirements. After all, SMP's test methods for patch cord component testing methods have helped form the basis for the Category 5e standards. This commitment to guaranteed performance is what makes SMP's A5E patch cords an excellent addition to any SMP Category 5e structured cabling system

- 100% component performance tested
- Exceeds TIA/EIA 568-B.2 Category 5e requirements
- Customizable lengths and colors available



APPLICATIONS

- 1000BASE-T Gigabit Ethernet
- 100BASE-TX Fast Ethernet
- 10BASE-T Ethernet
- Broadband Video
- 155/622 Mbps ATM
- 100 Mbps TP-PMD
- 4/16 Mbps Token Ring
- Voice
- All applications developed for operation over Category 5e or class D cabling

A5E™ Patch Cords

Catalog Number	Description
PC5EBxyy	Category 5e patch cord without boot
PC5EBxxByy	Category 5e patch cord with boot
*Replace xx with length in feet; replace yy with color code – (06) gray, (09) yellow	
** Ex: = PC5EB03B09 – Category 5e patch cord, 3 feet, with boot, yellow	

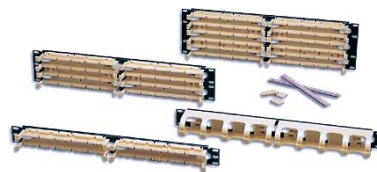


110 Wiring Products

APPLICATIONS

- 1000BASE-T Gigabit Ethernet
- 100BASE-TX Fast Ethernet
- 10BASE-T Ethernet
- Broadband Video
- 155/622/1000 Mbps ATM
- 100 Mbps TP-PMD
- 100 VG AnyLAN
- 4/16 Mbps Token Ring
- Voice

Whether installing a Category 5e or Category 6 system, SMP offers a complete solution with 110 Block connectivity. SMP's 110 product line offers easy network cabling consolidation and quick transitions with maximum performance. From wall mount to rack mount 110 blocks and cable organizers, SMP's selection of products offer customers a solid backbone for an exceptional structured wiring solution.



- Exceeds industry standards for Category 5e and Category 6 specifications, respectively
- 110 Blocks may be field terminated with 22-26 AWG solid wire
- Color coded pairs for easy identification
- Designation labels included
- Order with legs when back case routing
- Order without legs when depth is limited or when frame mounting
- 110 Block may be kitted for easy installations

Category 5e 110 Wiring Products

Category 5e 110 Wiring Products

Catalog Number	Description
C410	Category 5e 110 C-4 Connector Blocks
C510	Category 5e 110 C-5 Connector Blocks
DCC50/110EFS*	Category 5e Wall Mount 110 Block, 50 Pair, Without Legs
DCC50/110EFSL*	Category 5e Wall Mount 110 Block, 50 Pair, With Legs
DCC100/110EFS*	Category 5e Wall Mount 110 Block, 100 Pair, Without Legs
DCC100/110EFSL*	Category 5e Wall Mount 110 Block, 100 Pair, With Legs
DCC300/110EFS*	Category 5e Wall Mount 110 Block, 300 Pair, Without Legs
DCC300/110EFSL*	Category 5e Wall Mount 110 Block, 300 Pair, With Legs
DCC300/110EFSTWB	Category 5e Wall Mount 110 Tower, 300 Pair, Mounting Frame
DCC300/110EFSTEXP	Category 5e Wall Mount 110 Tower, 300 Pair, Extension Mounting Frame
DCC100/110EFSRK	Category 5e Rack Mount 110 Block, Kitted 100 Pair
DCC200/110EFSRK	Category 5e Rack Mount 110 Block, Kitted 200 Pair
DCC300/110EFSRK	Category 5e Rack Mount 110 Block, Kitted 300 Pair

*Place a "K" at the end of the part number for a complete kit.
 Ex: DCC48/110EFSLK = Category 5e Wall Mount 110 Block with Legs and Connectors

Category 6 110 Wiring Products

Category 6 110 Wiring Products

Catalog Number	Description
C64-10	Category 6 110 C-4 Connector Blocks
DCC48/110SIX*	Category 6 Wall Mount 110 Block, 48 Pair, Without Legs
DCC48/110SIXL*	Category 6 Wall Mount 110 Block, 48 Pair, With Legs
DCC96/110SIX*	Category 6 Wall Mount 110 Block, 96 Pair, Without Legs
DCC96/110SIXL*	Category 6 Wall Mount 110 Block, 96 Pair, With Legs
DCC288/110SIX*	Category 6 Wall Mount 110 Block, 288 Pair, Without Legs
DCC288/110SIXL*	Category 6 Wall Mount 110 Block, 288 Pair, With Legs
DCC288/110SIXTWB	Category 6 Wall Mount 110 Tower, 288 Pair, Mounting Frame
DCC288/110SIXTEXP	Category 6 Wall Mount 110 Tower, 288 Pair, Extension Mounting Frame
DCC96/110SIXRK	Category 6 Rack Mount 110 Block, Kitted 96 Pair
DCC192/110SIXRK	Category 6 Rack Mount 110 Block, Kitted 192 Pair
DCC288/110SIXRK	Category 6 Rack Mount 110 Block, Kitted 288 Pair

*Place a "K" at the end of the part number for a complete kit.
 Ex: DCC48/110SIXLK = Category 6 Wall Mount 110 Block with Legs and Connectors

Cable Organizers



110 Block Cable Organizers

Catalog Number	Description
COH110	Wall Mount Horizontal Cable Organizer without Legs
COH110L	Wall Mount Horizontal Cable Organizer with Legs
DCC300/110EFSTHVC	Wall Mount Vertical Cable Organizer, For 110 Tower
DCC300/110EFSTVC	Wall Mount Vertical Cable Organizer Extension, For 110 Tower
COH110R	Rack Mount Horizontal Cable Organizer, 19" Width